

### Machining, Casting, Coating

**(Ceramic coating, Tungsten coating, Metal hard chrome)**

The industry is continuously forced by economic and environmental reasons to improve the service life time of machines and components using optimized surface properties. The coating thickness will depend on the application, but generally will vary from 0.005 (0,127 mm) to 0.030 inch (0,762 mm).

A hardness of 1200-1500 Vickers (approximately 70-75 Rockwell C). Generally, most applications will require a surface finish from 2 to 8 micro inch (0,05 to 0,20 $\mu$ ) Ra.



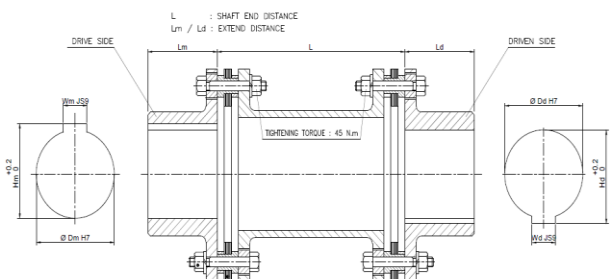
### Bearing Bushing

**(Carbon, Silicon Carbide, Tungsten Carbide)**



### Flexible Coupling

The flexible coupling is a device used to transmit movement and torque from the driving machine to the driven machine to accommodate axial, radial and angular misalignments which occur between driving and driven machinery due to errors in manufacturing and mounting load-deformation and temperature variation.



### Rubber & Plastic Engineering

**Special O-ring & Lip Seal (KALREZ, TTV, FEP, AFLAS, etc)**



### Casting

**(Bronze, SUS 304, SUS 316, etc.)**

